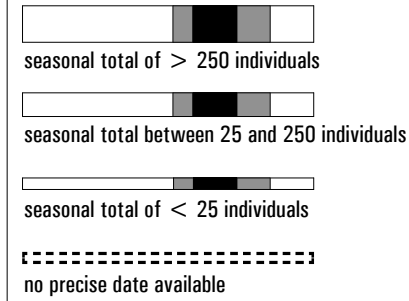
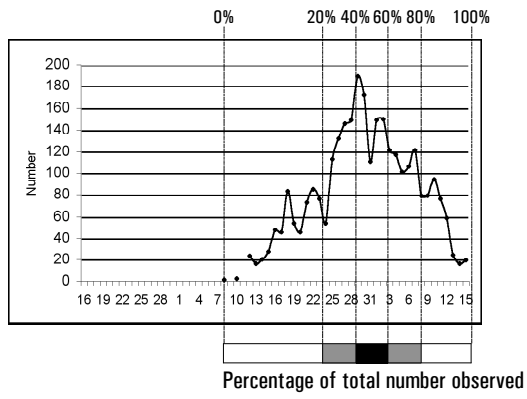


Legend



I: individual sightings (cumulative total less than 20 birds)
 *: species banded at Cabot Head Research Station (1998-2005)
 italics : species reported within 16 km of CHRS but not in the Cabot Head Checklist Area
 B : breeder in the area, based on the Ontario Breeding Bird Atlas

	April	May	June	August	September	October
Snow Goose						
Brant			I			I
Canada Goose				B		
Mute Swan		IIII	III			
Wood Duck				B	I	I
Gadwall	I					
American Wigeon	I	I				
American Black Duck					II	I
Mallard				B		
Blue-winged Teal	I	I	II	B		
Northern Shoveler			I	B		
Northern Pintail			I	B		
Green-winged Teal	I	II				
Ring-necked Duck				B		
Greater Scaup	I	I				I
Lesser Scaup		III				II
Surf Scoter		III				
White-winged Scoter						II
Black Scoter			II			II
Long-tailed Duck						
Bufflehead						
Common Goldeneye				B		
Hooded Merganser						

	April	May	June	August	September	October
Common Merganser				B		
Red-breasted Merganser				B		
Ruddy Duck						
Ruffed Grouse				B		
Wild Turkey				B		
Red-throated Loon	I					I
Common Loon				B		
Pied-billed Grebe	II	III	I	B		
Horned Grebe						
Red-necked Grebe						
Eared Grebe						
Double-crested Cormorant						
American Bittern			I	B		
Great Blue Heron				B		
Great Egret			I			
Green Heron			I	B		
Turkey Vulture				B		
Osprey				B		II
Bald Eagle				B		
Northern Harrier				B		
Sharp-shinned Hawk*				B		
Cooper's Hawk*	III	I	II	B	IIII	I
Northern Goshawk					I	I
Red-shouldered Hawk				B		
Broad-winged Hawk				B		
Red-tailed Hawk				B		
Rough-legged Hawk						II
Golden Eagle	I	II				II
American Kestrel				B	III	II
Merlin*				B		
Peregrine Falcon	II	IIII	I		I	IIII
American Coot	I			B		
Sandhill Crane				B		
Black-bellied Plover						
Semipalmated Plover						
Killdeer				B	III	II
Greater Yellowlegs						
Lesser Yellowlegs			III			
Solitary Sandpiper		I	II			
Short-billed Dowitcher						
Spotted Sandpiper				B		

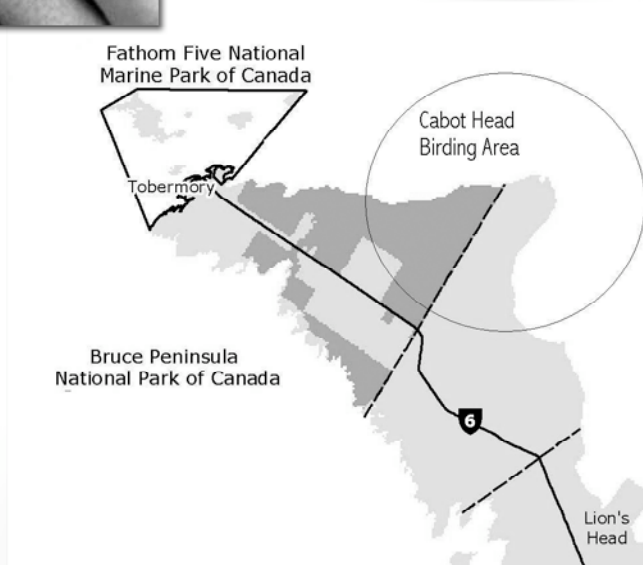
Cabot Head Provincial Nature Reserve is the core area for this checklist. Birds included are those observed within 16 kilometres of the Cabot Head Research Station, located on Wingfield Basin.

Included in this area is the village of Dyers Bay, and the Crane Lake, Lark Whistle and Gilles Lake areas. The new list includes several additions to the original list (first published in 2001), and most significantly uses four years of continuous migration monitoring data gathered at the Cabot Head Research Station by the Bruce Peninsula Bird Observatory (BPBO). The station is operated each spring from mid April to mid June and in the late summer and fall from mid August to early November. Data from migration monitoring have been used to produce bar graphs for each species observed at the monitoring station. Each graph depicts the dates that a species is present and its relative abundance – or likelihood of being observed – at that time.



Since 1998, 229 species have been observed at the migration monitoring station, of which 111 have been banded. 11 more species have been seen outside the count area of the Cabot Head Research Station. In addition, 149 of the species on the list are known to breed in the area, based on data from the Ontario Breeding Bird Atlas project.

We acknowledge and are grateful for support from the Ontario Trillium Foundation and Ontario Parks. This list was produced by Stéphane Menu with input from the BPBO Board of Directors. Layout was by Annick Boulay.



Migration Checklist of the Birds of Cabot Head Area



Bruce Peninsula Bird Observatory is a Charitable Non-profit member-based organization striving to be "the voice for the birds on the Bruce." Our goal is "to foster the study, appreciation and conservation of birds and their habitats in the Bruce Peninsula area of Ontario." For more information on membership and our programs, visit our website at www.bpbo.ca

Contacting BPBO

Bruce Peninsula Bird Observatory
 RR# 1
 Miller Lake, Ontario
 NOH 170
 (519) 795-7652
info@bpbo.ca

